

## Viega Pexfit Pro

The flexible piping system  
that ensures reliability.



**viega**



**Viega.**  
**CONNECTED IN QUALITY.**

Viega is convinced: Quality is everything. Without quality, everything means nothing. That is why the company strives to exceed itself each and every day. By means of regular dialogue with its customers, by developing better products and service features and by an approach to the future that does not lose sight of its past.

Viega has been connected in quality for over 115 years. It all began with the vision of revolutionizing installation technology. Today, Viega is still a family-owned company, but now a world market leader with over 4,000 employees and 10 locations spread over the globe. And it still remains true to itself and sets its own high standards.

It is of importance to Viega to support its customers in their daily work. To this end, it shares its knowledge with customers all over the world, matches materials, technology and comfort, takes time for quality management and invests in research and development. The result: a perfectly coordinated system providing customers fast and reliable access to over 17,000 products.

Quality is everything. Without quality, everything means nothing.



## Viega Pexfit Pro

# A SAFE CONNECTION MADE IN GERMANY



**Pressing with the Viega safety factor**  
Pexfit Pro relies on the tried and tested Viega press connecting technology. Its superiority is displayed equally in the rapid, simple installation and a unique safety factor: the Viega SC-Contur. This feature is present on every size of PPSU or red brass connector from 16 to 63 mm in the Pexfit Pro range.

### Central pressure test thanks to SC-Contur (fig. 1)

As the first on the market, Viega guarantees that a complete pressure test can be carried out centrally using a manometer, as long as the entire system is fitted with Viega SC-Contur. The central leakage test offers more security and comfort than the normal necessary visual check of each individual press connector. If connectors are unintentionally left unpressed, the medium leaks out and is shown as a loss of pressure on the manometer.

If pneumatic test is carried out instead of a wet test, the hygiene risks are lowered. These are created by the stagnant water in the pipes in the time between the first filling and commissioning.

### High quality materials – the best protection against corrosion

Durable, permanently safe and always hygienic. Pexfit Pro press connectors are the right choice for installations in building technology.



A high degree of installation safety and perfect quality are guaranteed in the long term. The extremely tight connectors with pre-assembled press sleeves made of stainless steel create an optimal holding function and prevent twisting after pressing.

### Checked insertion depth

The control window on the press connector allows the installer to check the correct insertion depth before pressing (insertion check).

### The flexible solution with special riser pipes

Pexfit Pro has proven itself on storeys. But the system's flexibility is of use in riser pipes and cellar manifolds, e.g. when narrow ducts are required during renovation work. Therefore, even pipes and press connectors up to 63 mm in diameter belong to the comprehensive range.

### Quick and safe processing

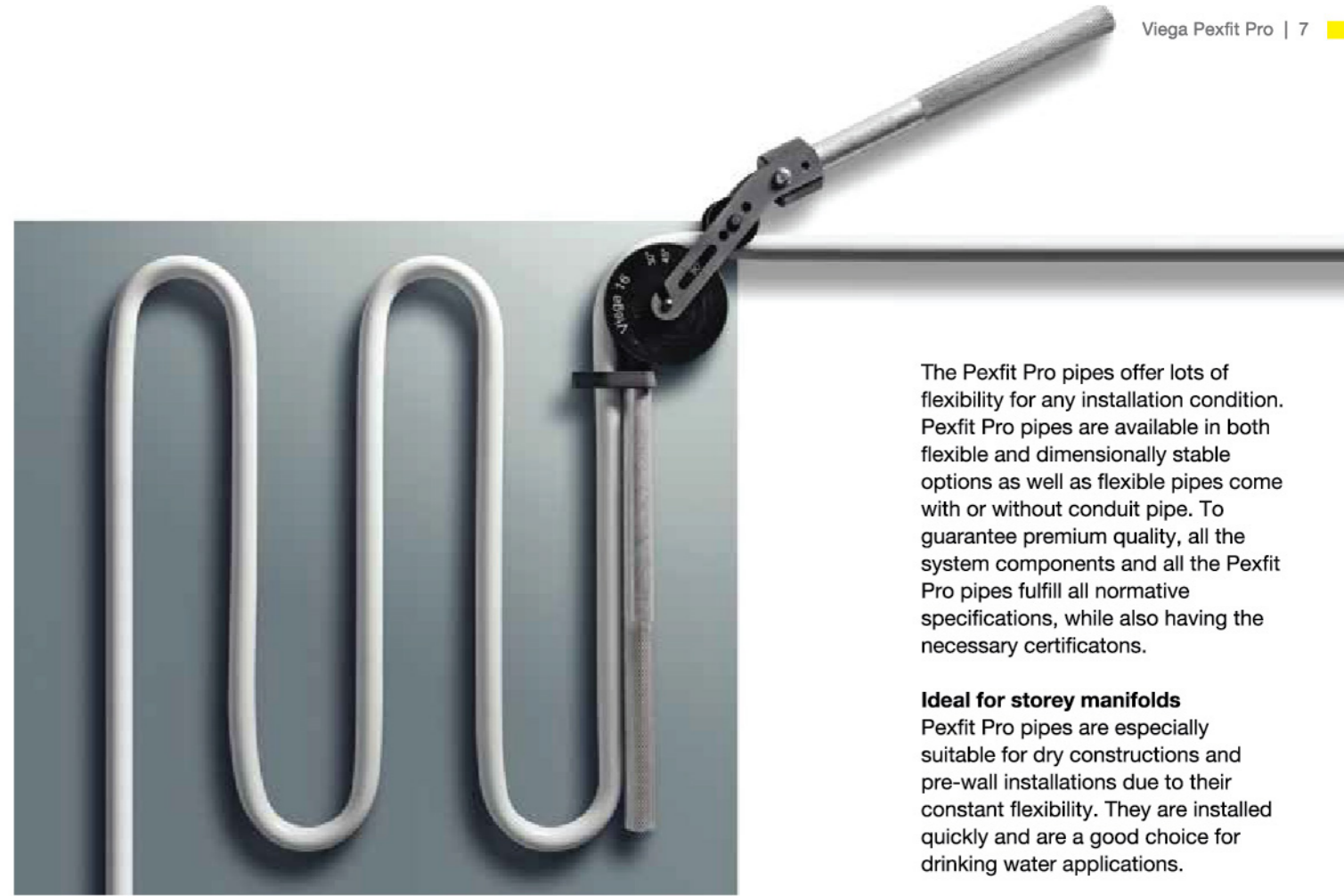
Pexfit Pro makes the work considerably easier. Especially during shortening or processing, the exceptional stability of the pipe is advantageous. In addition, the connection to the press connectors is solved perfectly.



1. Shorten pipe
  2. Mount connector
  3. Press, finished!
- That saves time and money.

**Viega Pexfit Pro**

# THE IDEAL PIPE FOR DRINKING WATER APPLICATION



The Pexfit Pro pipes offer lots of flexibility for any installation condition. Pexfit Pro pipes are available in both flexible and dimensionally stable options as well as flexible pipes come with or without conduit pipe. To guarantee premium quality, all the system components and all the Pexfit Pro pipes fulfill all normative specifications, while also having the necessary certifications.

**Ideal for storey manifolds**  
Pexfit Pro pipes are especially suitable for dry constructions and pre-wall installations due to their constant flexibility. They are installed quickly and are a good choice for drinking water applications.

**Flexibility at every corner**

Viega's flexible Pexfit Pro pipe made from PE-RT is designed especially for easy handling during any installation condition. A flexible pipe can bend around any obstacle on the job with ease. This eliminates the need for many connectors and saves time during installation.

**Maximum stability**

Pexfit Pro Fosta combines optimal handling with high pressure stability. Pexfit Pro Fosta consists of a polymer inliner and outer layer with aluminium in the middle. The pipe's construction allows the pipe to be bent into the required shape and will remain so permanently. A real work-saver in confined spaces and a good opportunity to save material.

**i ADVANTAGES OF PEXFIT PRO**

- Flexible pipe bends around obstacles eliminating many fittings
- Available in coils means less volume for easy transport
- Able to cut to length reducing unnecessary scrap
- In dimensions 16-25 mm
- Suitable for hot and cold water, thus no chance of mix-ups on jobsite
- Available as pipe-in-pipe for faster installations

**i ADVANTAGES OF PEXFIT PRO FOSTA**

- Flexible, yet form stable and thus is able to be bent and hold its shape
- In dimensions 16-63 mm
- Available in coils means less volume for easy transport
- Able to cut to length reducing unnecessary scrap
- Suitable for hot and cold water, thus no chance of mix-ups on jobsite



PE-Xc  
-Inliner

Aluminium  
layer

PE-Xc  
outer layer

# Viega Pexfit Pro COMPLETE INSTALLATION MADE EASY



With Viega on your side, you won't have any problems with drinking water installations. The complete product range contains the perfect economic solution for every challenge.

### Manifolds allow easy access

Pexfit Pro manifolds offer an innovative solution with flexible tubing. The manifolds are equipped with individual shut off valves. This allows for easy access without disturbing other units when maintenance is required.

### Concealed connection socket

The Pexfit Pro concealed connection socket is a Viega solution especially for pipe-in-pipe installations. It protects the interface to the water fitting against building site conditions and allows a simple pipe exchange with minimal damage to tiles.

### Perfect for pre-wall installations

No matter if Viega Eco Plus or Viega Mono concealed cisterns are used in pre-wall installations, Pexfit Pro pipes fit in perfectly into every Viega pre-wall technology system. Thanks to easy shaping and excellent dimensional stability, they simplify the assembly considerably and provide everything one expects from a modern drinking water installation.

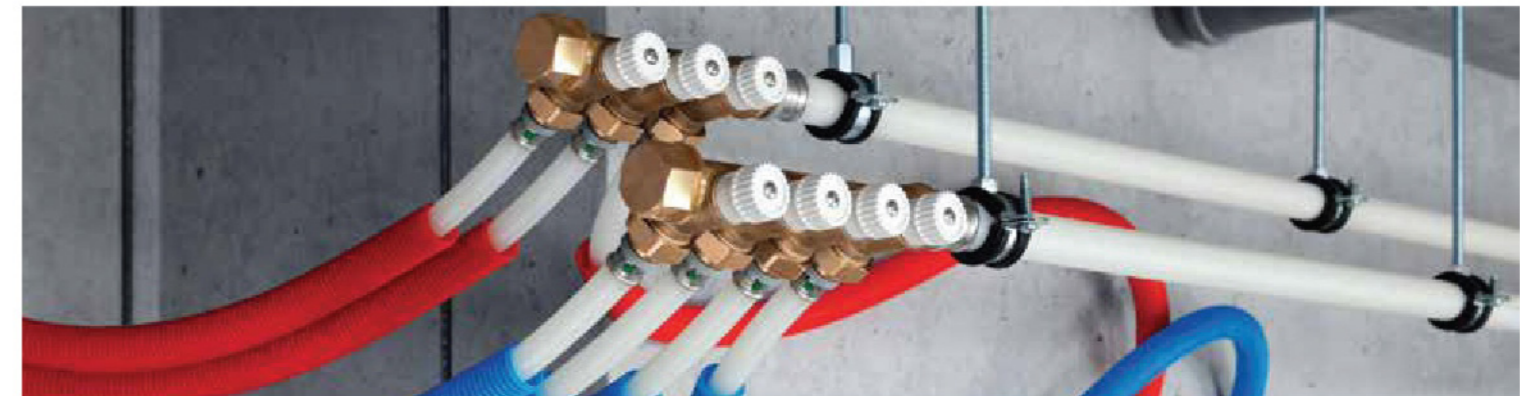


Manifold

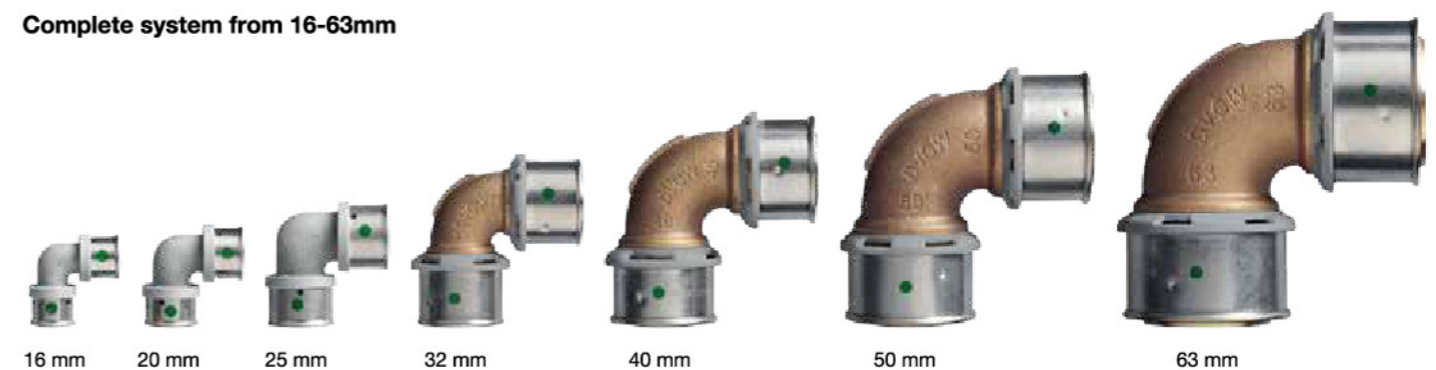
Concealed connection socket

**i** **ADVANTAGES AT A GLANCE**

- Flexible pipe reduces the number of required connections
- All connectors come with SC-Contur
- Manifolds with individual shut-off valves for easy maintenance
- Complete system from piping to pre-wall is available from Viega



### Complete system from 16-63mm



## Viega Pexfit Pro

# ENSURES THE PUREST QUALITY FOR DRINKING WATER

The highest level of pressure and temperature resistance

The reassurance of the Viega SC-Contur

Connectors made of high-quality PPSU with pre-assembled stainless steel sleeves

No scaling

### Drinking water hygiene requirements

Drinking water is most important for sustenance. Therefore, the microbiological, chemical and physical requirements placed on piping systems have been raised. The quality of the drinking water must be guaranteed at every point of extraction. It is the duty of installers, planners and operators to maintain the water quality.

### Viega drinking water competence

When it comes to drinking water, only high quality systems offer maximum safety. Pexfit Pro pipes are entirely suitable for use in drinking water installation. They are hygienic and fulfill all regulatory requirements.

### State of the art: T-piece installation

The customary type of installation for drinking water is still the T-piece installation, in which each outlet point is connected through a branch line. Whereby, in terms of preservation of the drinking water quality, the branch line should always be kept as short as possible.

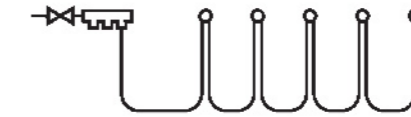
### The Viega modular system

When different materials such as copper, red brass, stainless steel or plastic have to be combined, there has to be a practical solution. The Viega modular system provides an economical and safe solution from one source.

### It's all a question of adapting

An extensive range of Pexfit Pro connectors with press connections allows quick, uncomplicated crossover to metal pipes. Adaptors for Prestabo, Sanpress, Sanpress Inox, Profipress or other Viega systems are possible without much effort. But the adaptors do more than lower the workload, they provide absolute safety. With the help of exactly suited dimensions as well as the protection of the Viega SC-Contur, there is freedom to choose between tried and tested materials.

Serial Piping



Ring Piping



### The future of drinking water installation:

#### Ring and series pipelines

A constant exchange of water in the drinking water installation is made available through series and ring systems. This means that the regular withdrawal of water at only one outlet point can help to keep the risk of stagnation and germination low.

The series installation is suitable for both cold and hot water, and it also provides a complete exchange of water when the outlet connected at the end of the series is operated. This type of installation is widely used.

The Pexfit Pro connectors and the double wall plates greatly increase the range available in the installation process. By contrast, the ring installation is particularly well-suited for cold water because of its hydraulic properties. Irrespective of the actual outlet used, the pipe volume is always completely exchanged. At the same time, the pressure losses are also minimized by splitting up the volumetric flow coupled with the associated reduction in flow rates.

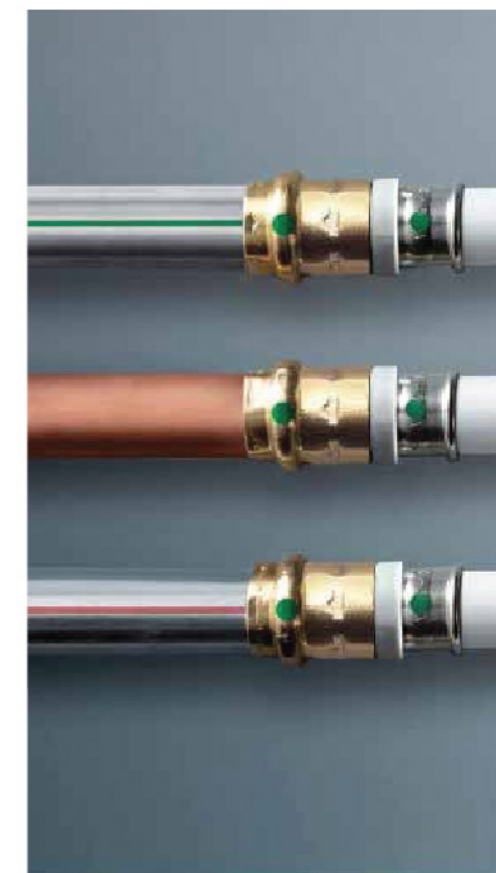
### The right adaptor for every connection



Adaptor



Insertion piece



Viega Pressguns

# LASTING CONNECTIONS MADE IN SECONDS



The Viega Pressgun 5 and Viega Pressgun Picco excel on account of their top quality and enable convenient and easy installation under the toughest of conditions. The tried-and-tested press jaws from Viega Pexfit Pro can easily be used. With their German Technical Inspection Agency (TÜV) certifications and long service intervals, Viega Pressguns are one of the most reliable, efficient and therefore most successful press tools in Europe.



Hand Press Tool

### Commonalities

- Easy operation with one hand through ergonomic gun shape
- Optionally available with mains operation or with the latest generation 18 V/2.0 Ah lithium ion rechargeable battery, with optimised cold-start function and an exhaustive-discharge protection device
- Rotatable through 180° press head and press rings with hinged function make it so much easier to access difficult to reach areas
- LED lamp for simple pressing in difficult lighting conditions
- German Technical Inspection Agency (TÜV) approved safety technology: activation delay, pin lock, maintenance display and automatic shut-off valve after reaching the maximum number of pressings



### SPECIAL FEATURES OF VIEGA PRESSGUN 5

- For press connectors made of metal in dimensions 12 to 108 mm
- For press connectors of the plastic pipeline systems in dimensions 16 to 63 mm
- Only 3.2 kg weight (without press jaw)
- Long maintenance intervals after 40,000 pressings or 4 years
- Automatic shut-off valves after 42,000 pressings



### SPECIAL FEATURES OF VIEGA PRESSGUN PICCO

- For press connectors made of metal in dimensions 12 to 35 mm
- For press connectors of the plastic pipeline systems in dimensions 12 to 40 mm
- Only 2.5 kg weight (without press jaw)
- Small structural dimensions for assembly in pipe shafts and pre-walls



Viega press jaws and press rings



Viega Pressgun 5 set case including accessories (also available as Pressgun Picco set case)



Press technology accessories in practical set case

## Viega Pexfit Pro

# AS FLEXIBLE AS YOUR IDEAS

At last, a system that is made to suit your needs completely. Pexfit Pro pipes are as flexible as you wish and as durable and reliable as you expect them to be. In combination with the new press connectors made of polyphenylsulphone (PPSU) and tried and tested Viega gunmetal connectors, they are suitable for nearly every installation in the house. **A system like no other.**

**The products at a glance:** The following overview of the individual elements from the Pexfit Pro range shows the versatility of the products. The number shown is the model number and describes the shape of the connector or component. Further detailed information can be found in the model number index in our catalogue.





SG 9/16 · We reserve the right to effect changes.

**Viega South East Asia Pte Ltd.**

28 Sin Ming Lane,  
#03-146, Midview City,  
Singapore 573972

**Viega EMEAPA GmbH & Co. KG**

Viega Platz 1, 57439 Attendorn  
Germany

